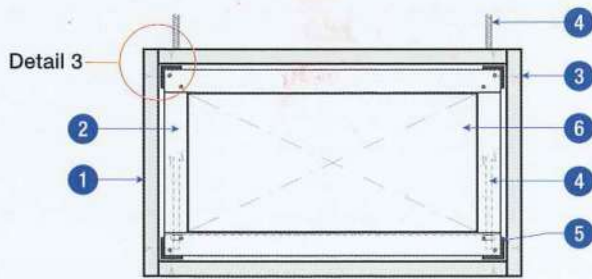


### 技術資料

2 小時防火時效，穩定性及完整性 (BS476: Part 24)

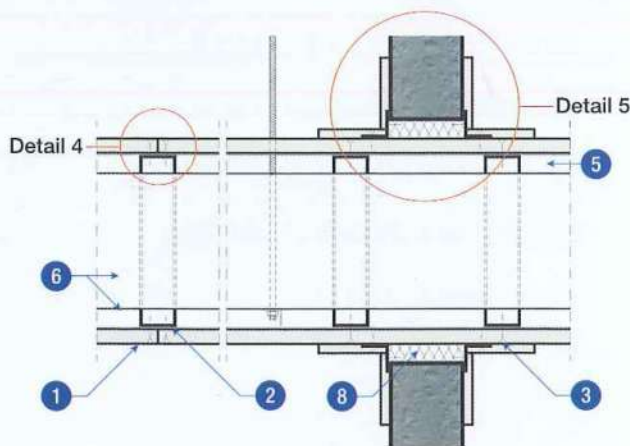
- ① PROMATECT®-H板 9mm 厚
- ② U 型鐵槽50 X 25 X 0.5mm
- ③ M4自攻螺絲200mm c/c
- ④ 支撐吊架，拉力不超於10 N/mm<sup>2</sup>，及最小以30mm X 30mm X 4mm 角鐵作橫支撐，視乎風管大小。
- ⑤ 角鐵 25 X 25 X 0.6mm
- ⑥ 鍍鋅鐵皮風管
- ⑦ PROMATECT®-H 襯板150mm寬，9mm 厚
- ⑧ 岩棉填塞



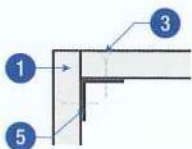
Detail 1 風管橫切面

4 小時防火時效，穩定性及完整性 (BS476: Part 24)

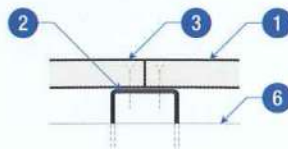
- ① PROMATECT®-H 板 12mm 厚
- ② U 型鐵槽 50 X 25 X 0.5mm
- ③ M4 自攻螺絲 200mm c/c
- ④ 支撐吊架，拉力不超於 6 N/mm<sup>2</sup>，及最小以30mm X 30mm X 4mm 角鐵作橫支撐，視乎風管大小。
- ⑤ 角鐵 25 X 25 X 0.6mm
- ⑥ 鍍鋅鐵皮風管
- ⑦ PROMATECT®-H 襯板150mm寬，12mm厚
- ⑧ 岩棉填塞



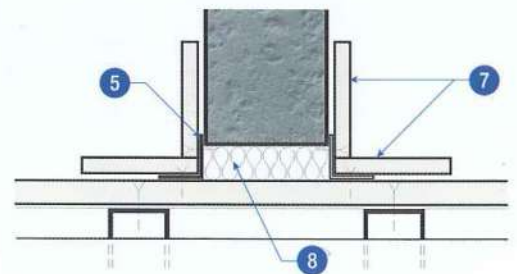
Detail 2 過牆位置



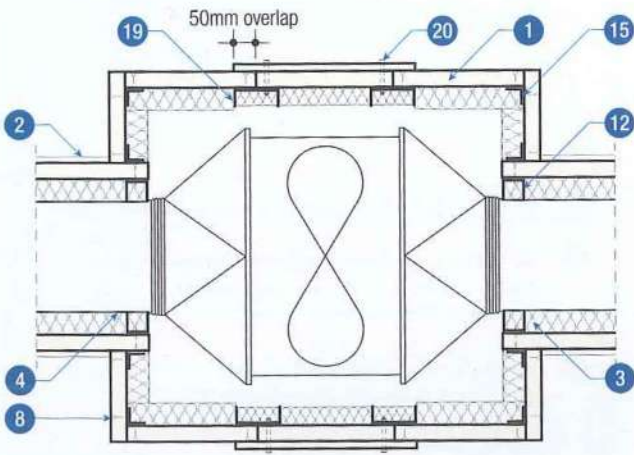
Detail 3



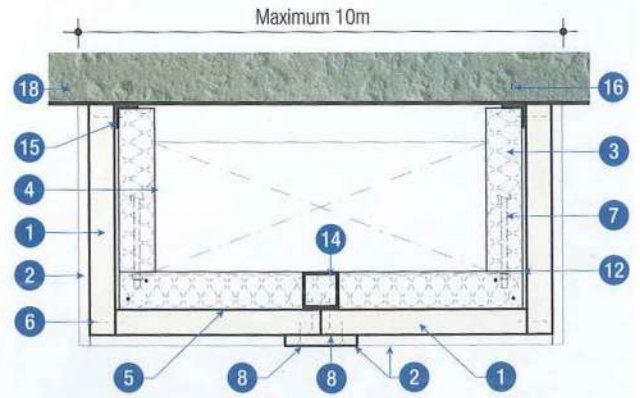
Detail 4



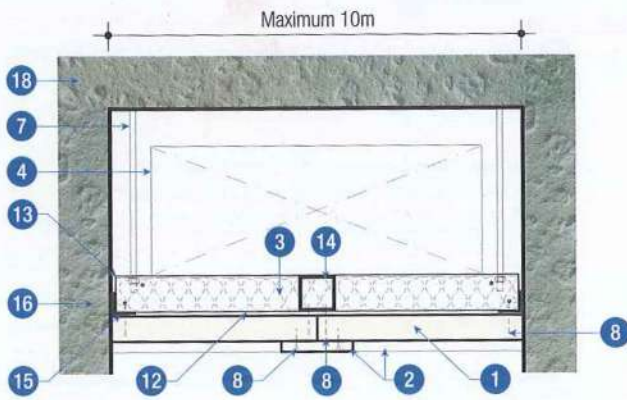
Detail 5



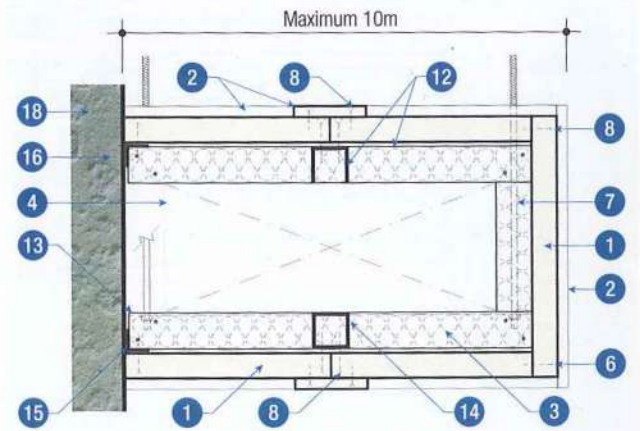
**Detail 2** Protection of VCD, silencers etc



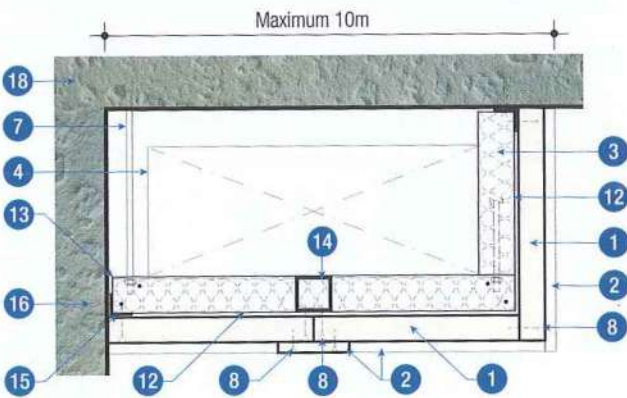
**Detail 5** 3-sided duct cladding (Case 1)



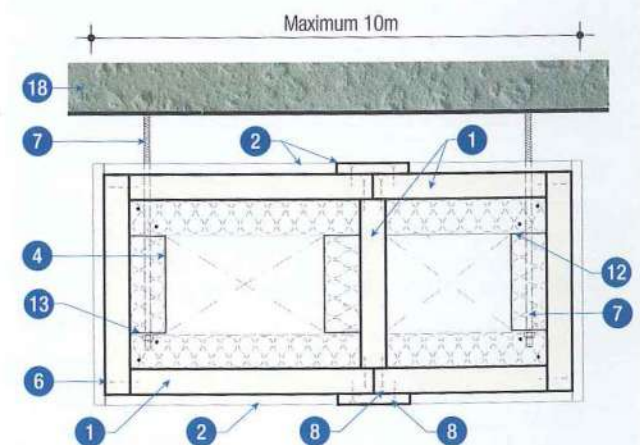
**Detail 3** 1-sided duct cladding



**Detail 6** 3-sided duct cladding (Case 2)



**Detail 4** 2-sided duct cladding



**Detail 7** Multiple duct cladding