



Rated per UL555 & UL555S, UL File R6189

Supplemental Installation Instructions For Assembly Of Multiple Section 5000 Series Combination Fire & Leakage Rated Dampers For Use With Vertical & Horizontal Ducts 1 1/2 Hour Rated

THESE INSTRUCTIONS APPLY TO ALL MODELS WITHIN THE 5000 SERIES. SEE APPROPRIATE DAMPER SUBMITTAL AND INSTALLATION INSTRUCTIONS FOR SPECIFIC MODEL SIZE LIMITATIONS.

1. Layout damper sections to be assembled. Clamp sections side by side with jackshaft slipped into provided mating couplings. Some damper assemblies may utilize left and right hand drive (viewed from jackshaft side) possibly eliminating jackshaft couplings.
2. Attach damper sections together using 3/16" steel rivets, #14 sheet metal screws, #8 screws & nuts or 1/2" long welds spaced 6" maximum center to center. Locate fasteners within 1/2" of rear frame flange (jackshaft side).
3. Close all damper sections into knee-locked position with all swing arms bottomed out onto jackshaft bracket tabs as noted in 'Detail A'.
4. Tighten all cone point socket set screws in jackshaft couplings as noted in 'Detail A'.
5. Install damper assembly into sleeve as per Sheet 5000-II

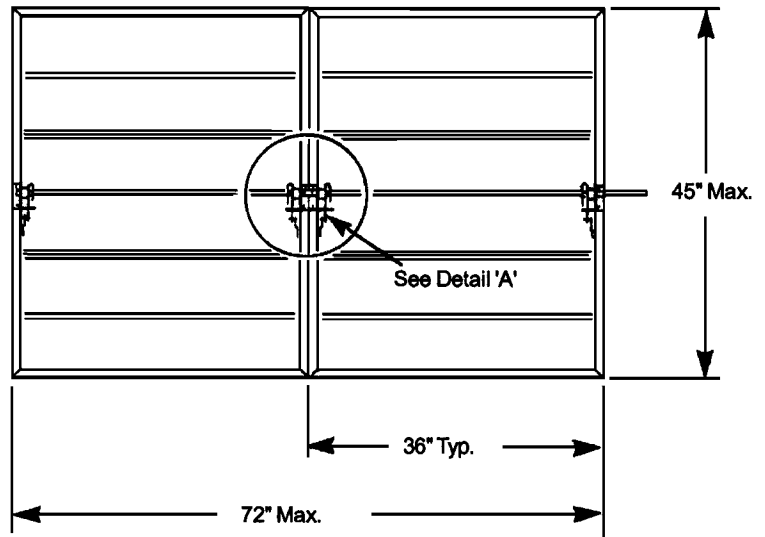
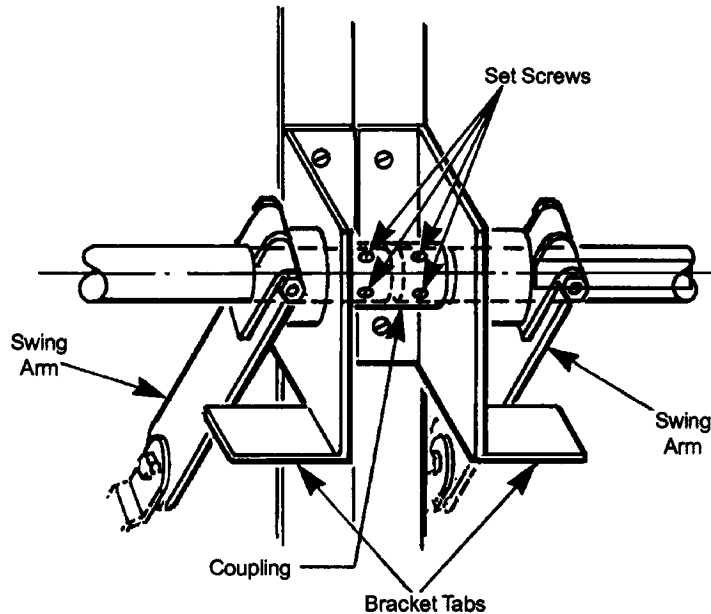


FIGURE 1



DETAIL "A"

OVER

REPRESENTED BY

**MANUFACTURED BY
PERFECT AIR CONTROL, INC.
1310 N. HERCULES AVE. CLEARWATER, FL 33765
CUSTOMER SERVICE (800) 437-6653 * ORDER ENTRY FAX (727) 431-6074
www.prefco-hvac.com**



Rated per UL555 & UL555S, UL File R6189

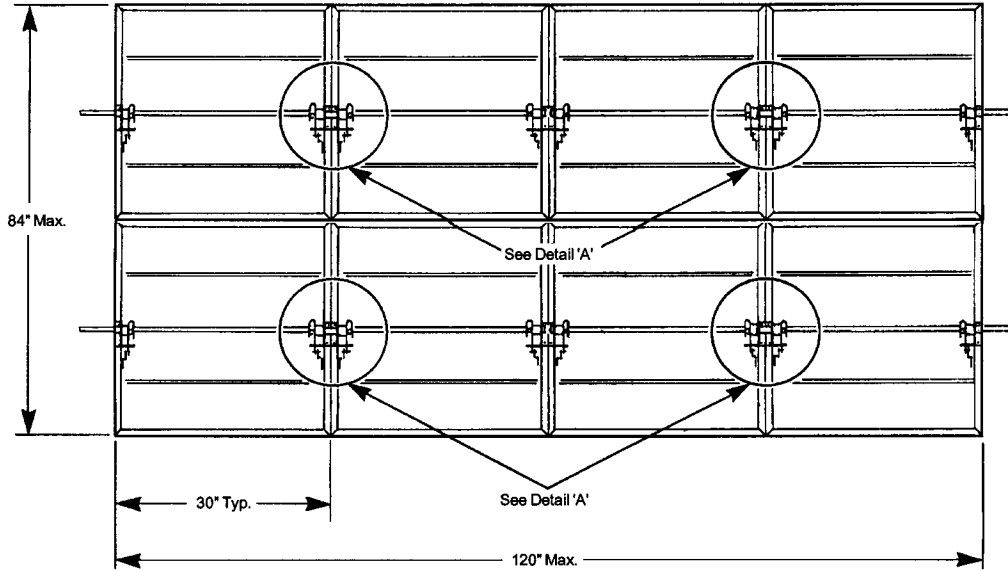


FIGURE 2

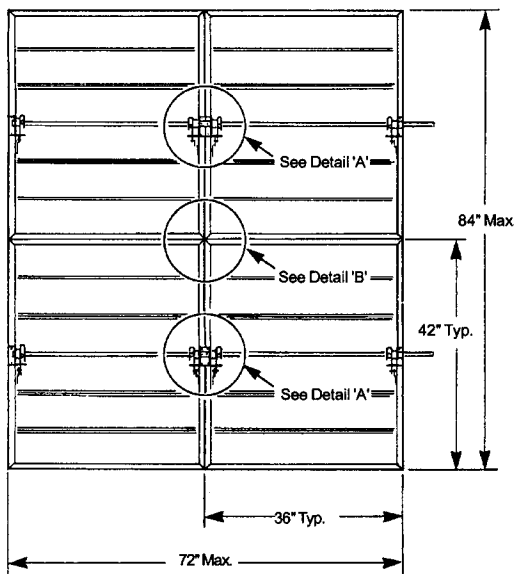
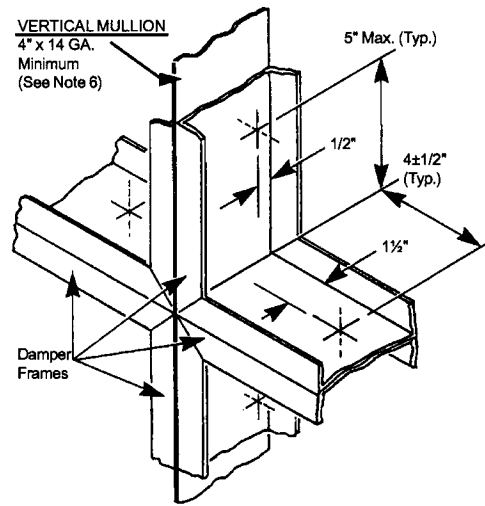


FIGURE 3



Detail 'B'

Note: Mullions only required at four (4) corner intersections.

1. Layout damper sections to be assembled. Clamp sections side by side with jackshaft slipped into provided mating couplings. Some damper assemblies may utilize left and right hand drive (viewed from jackshaft side) possibly eliminating jackshaft couplings.
2. Attach damper sections together using 3/16" steel rivets, #14 sheet metal screws, #8 screws & nuts or 1/2" long welds spaced 6" maximum center to center. Locate fasteners within 1/2" of rear frame flange (jackshaft side).
3. Close all damper sections into knee-locked position with all swing arms bottomed out onto jackshaft bracket tabs as noted in 'Detail A'.
4. Tighten all cone point socket set screws in jackshaft couplings as noted in 'Detail A'.
5. Install damper assembly into sleeve as per Sheet 5000-II
6. Mullion thicker than 14 gauge requires special damper sizing. Factory must be notified.